



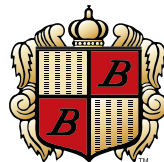
Baron**·**Blakeslee
A Wholly-Owned Subsidiary of Service Filtration Corporation

Tube Flushing Systems

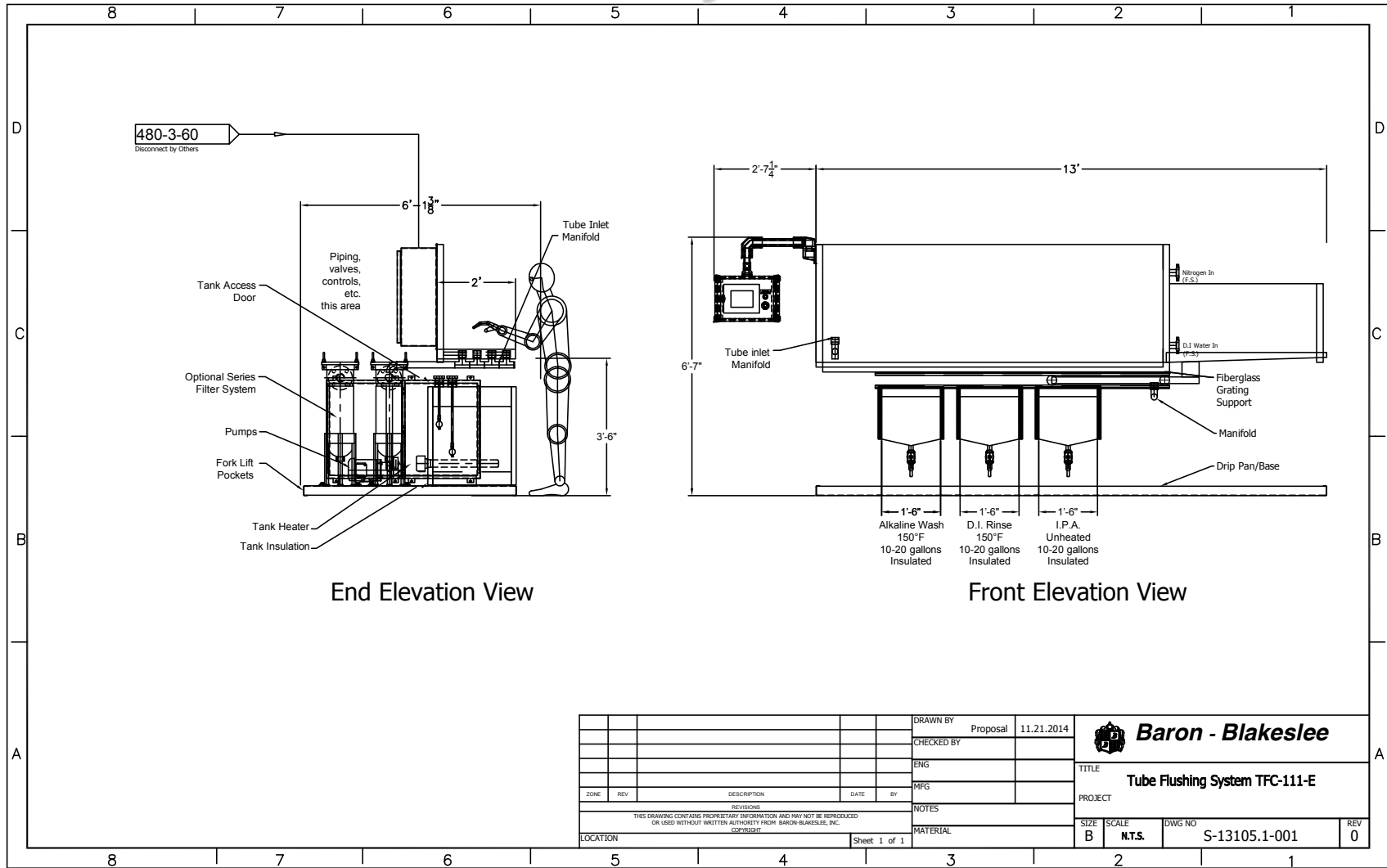
Tube Flushing Systems

All Systems Shown Herein Are EXAMPLES Of Tube Cleaning Systems,
And Are Not Intended to Represent The Exact Design Which May Be
Appropriate For The Viewer's Particular Application.

Custom Designed For Specific Applications
Solvent, Co-Solvent, Aqueous & Semi-Aqueous Processes Available
Efficient Cleaning Of A Variety Of Tubing Types
Coupling / Flushing For Thorough Cleaning Of IDs
Manual + Automatic Process Designs
Made In USA

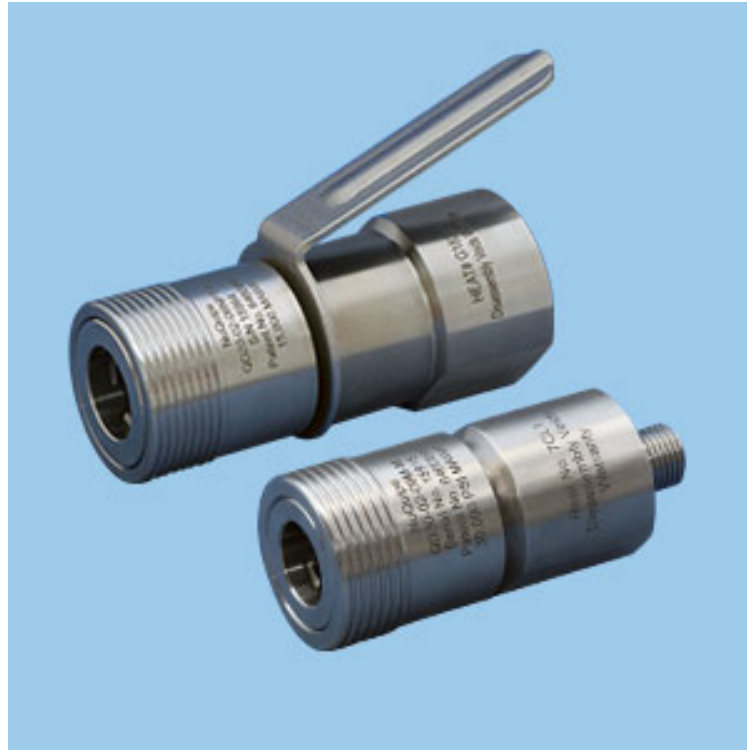


Workbench Style Tube Flusher



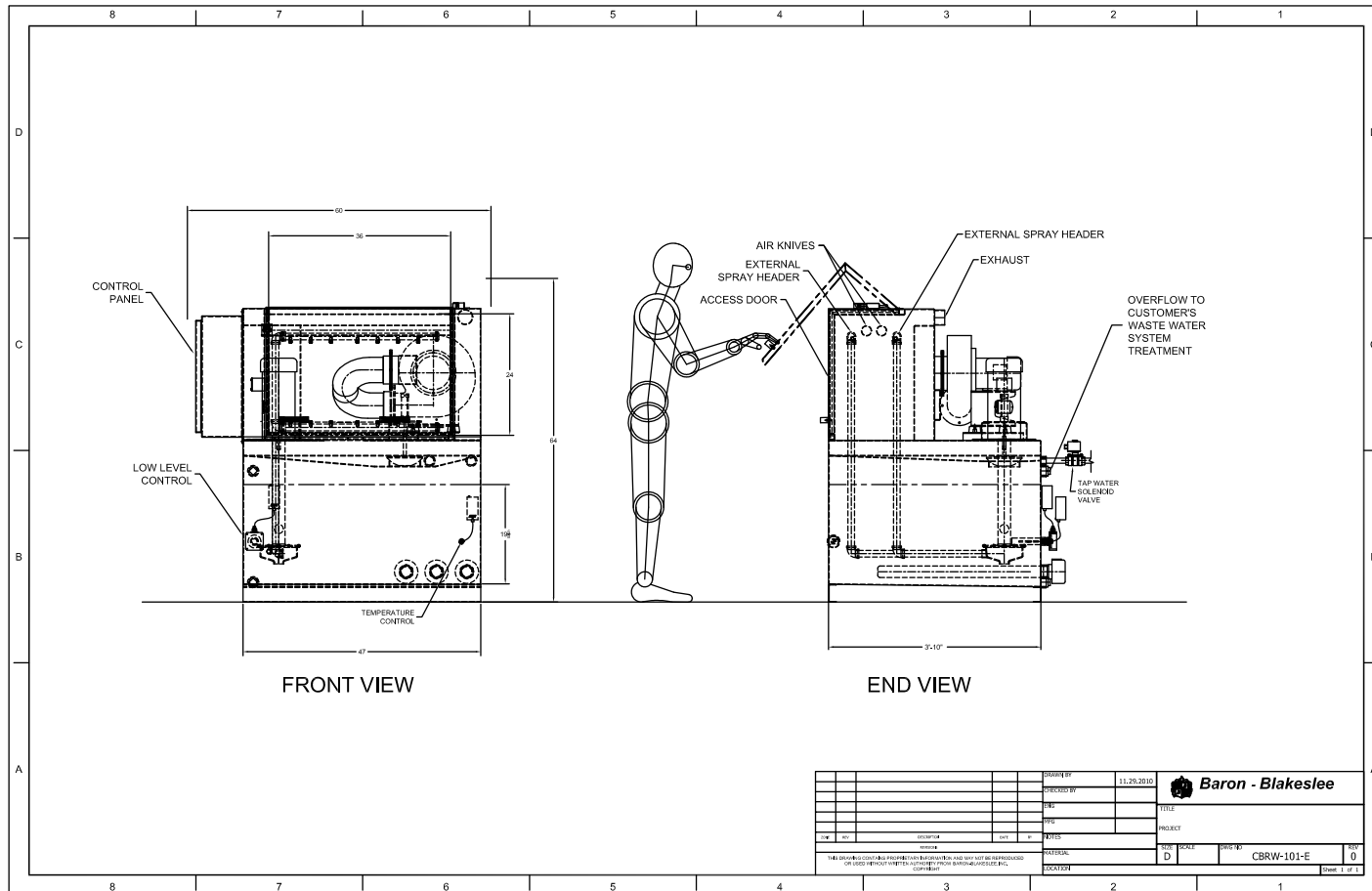
**Provides Workbench Style Work Surface For Manual Tube Coupling
Aqueous Process For Bent Tubes, Or Tubes With Complex Geometries
Conforming Clamps For Tubing With Or Without End Fittings**

Quick Disconnect Coupling



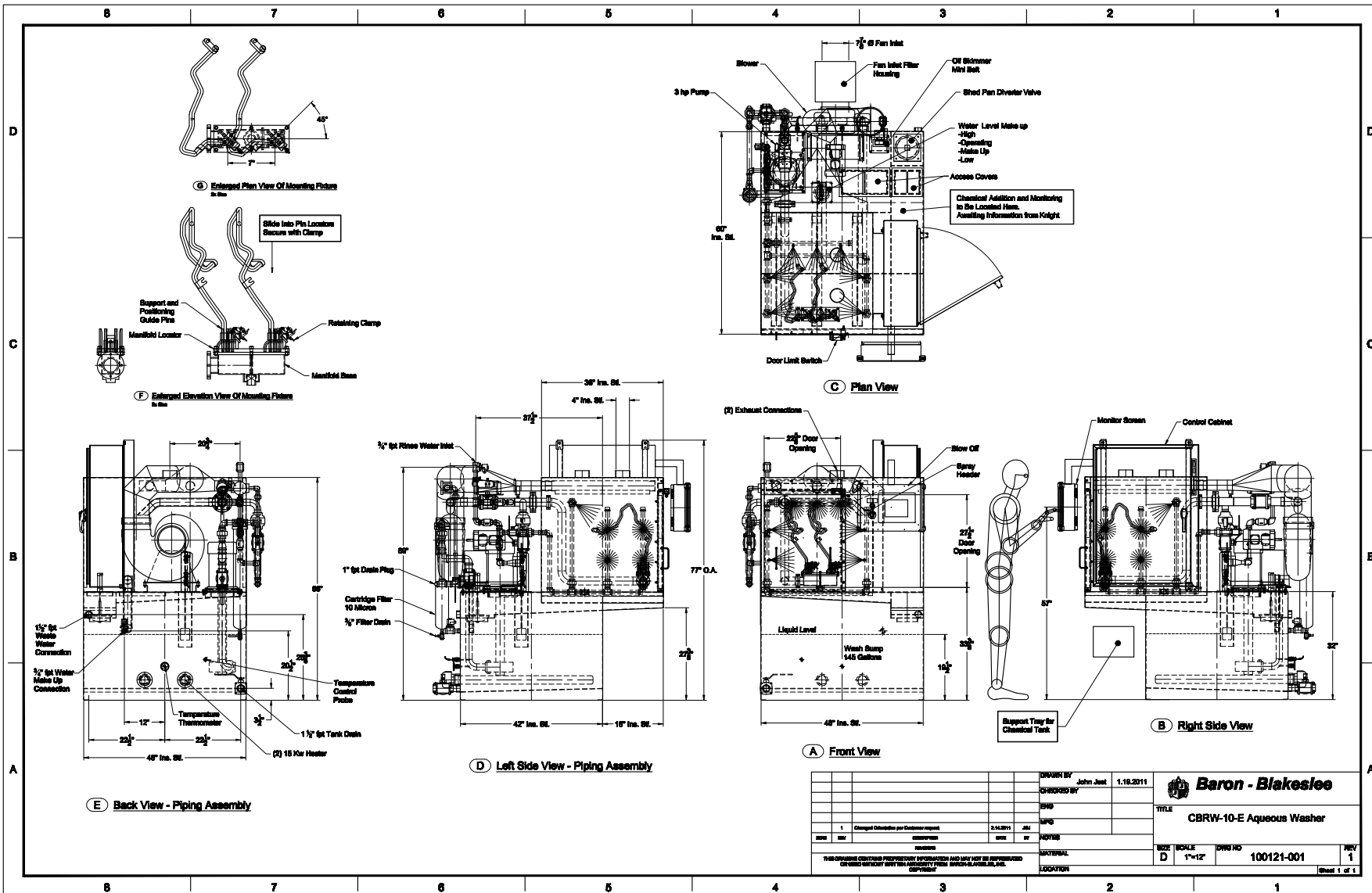
For Tubing Without End Fittings
Conforms To A Range Of ODs
Will Not Mar OD Surfaces

Bent Tube Flusher



**Aqueous Process For Bent Tubes, Or Tubes With Complex Geometries.
Conforming Clamps For Tubing With Or Without End Fittings.
ID + OD Cleaning**

Bent Tube Flusher



DRAWN BY		John Just	1.18.2011		Baron - Blakeslee	
CHECKED BY					TITLE	
DATE				CBRW-10-E Aqueous Washer		
1	Change	Customer request	2.16.2011	JJK		
THIS DRAWING CONTAINS PROPRIETARY INFORMATION AND MAY NOT BE REPRODUCED OR TRANSMITTED IN ANY FORM OR BY ANY MEANS, ELECTRONIC OR MECHANICAL, INCLUDING PHOTOCOPYING, RECORDING, OR BY ANY INFORMATION STORAGE AND RETRIEVAL SYSTEM.				NATIONAL		
SIZE		MOULE		DWG NO		REV
D		1"=12"		100121-001		1
LOCATION						(Sheet 1 of 1)

Bent Tube Flusher



Bent Tube Flusher



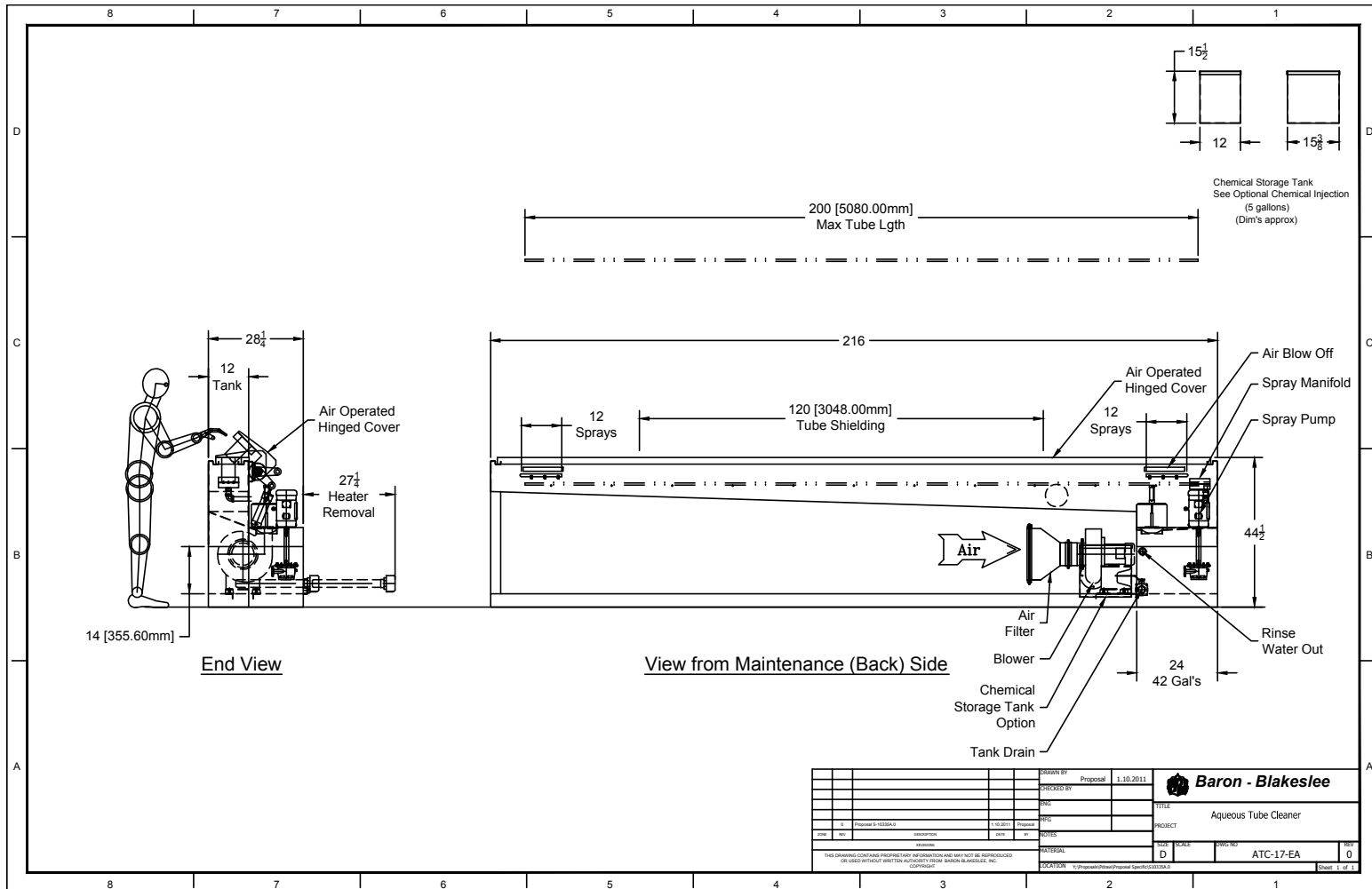
Manifold Detail

Bent Tube Flusher



Manifold Detail

Straight Tube Flusher



Aqueous Process
Conforming Clamps For Tubing With End Fittings.
ID + OD Cleaning

Straight Tube Flusher



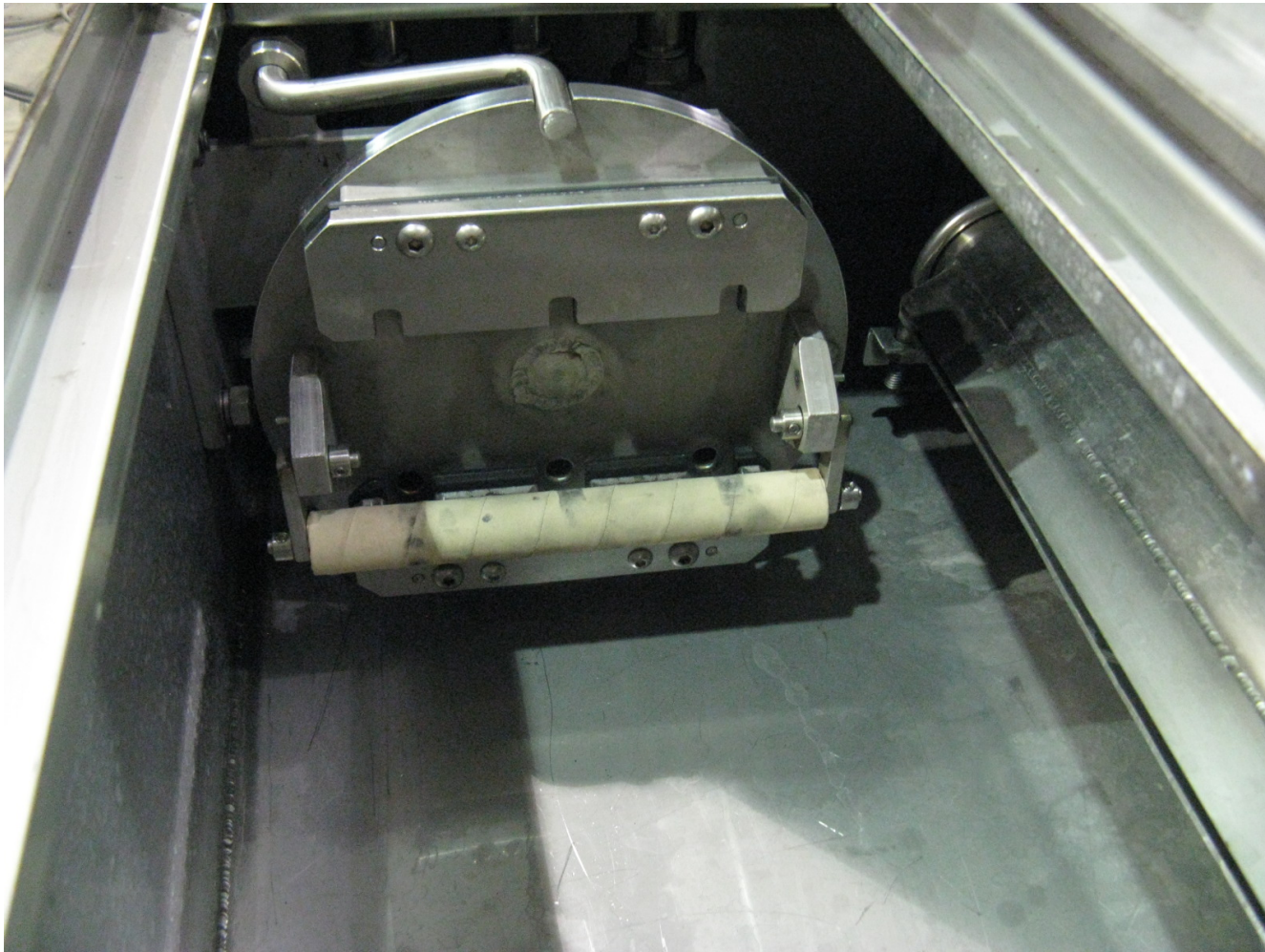
Straight Tube Flusher



Straight Tube Flusher

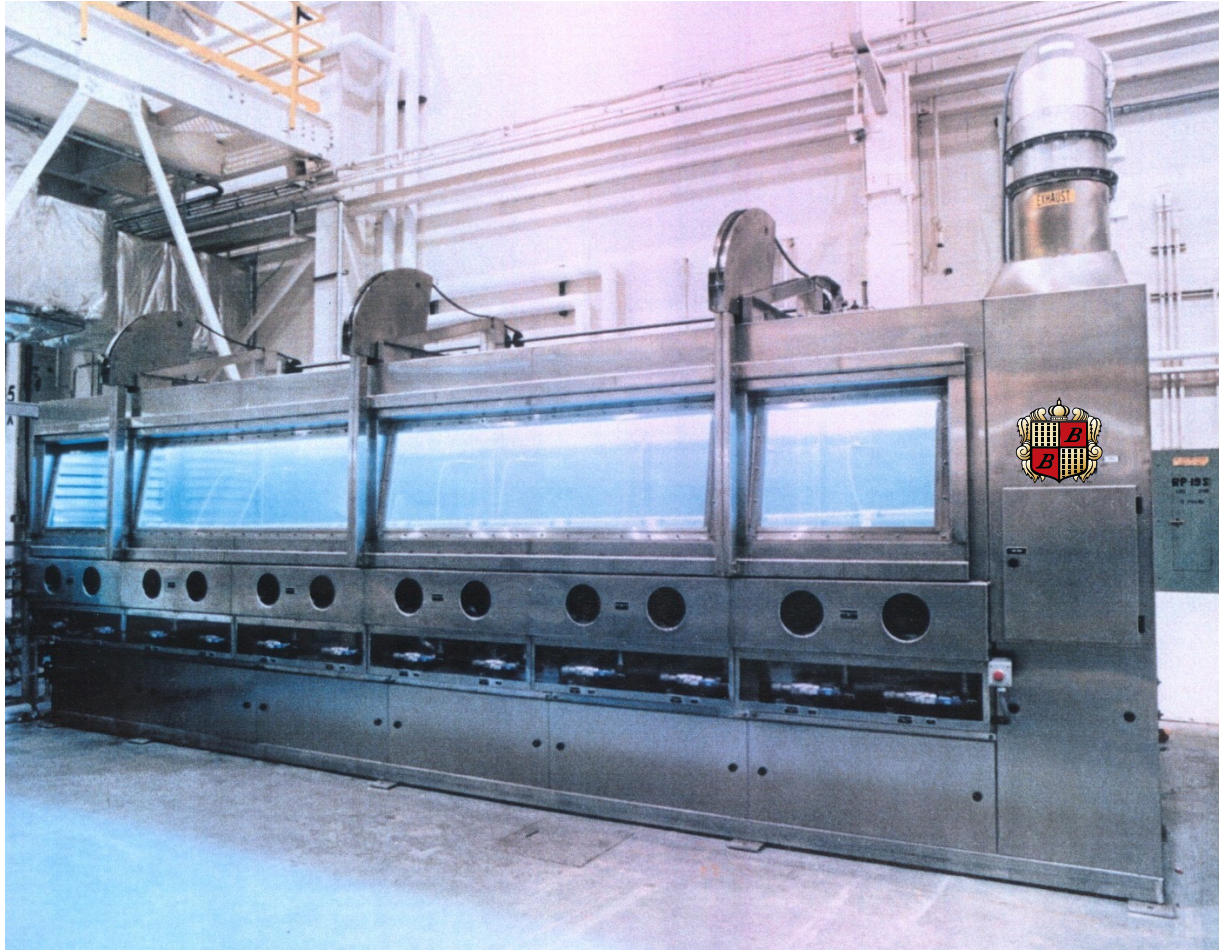


Straight Tube Flusher



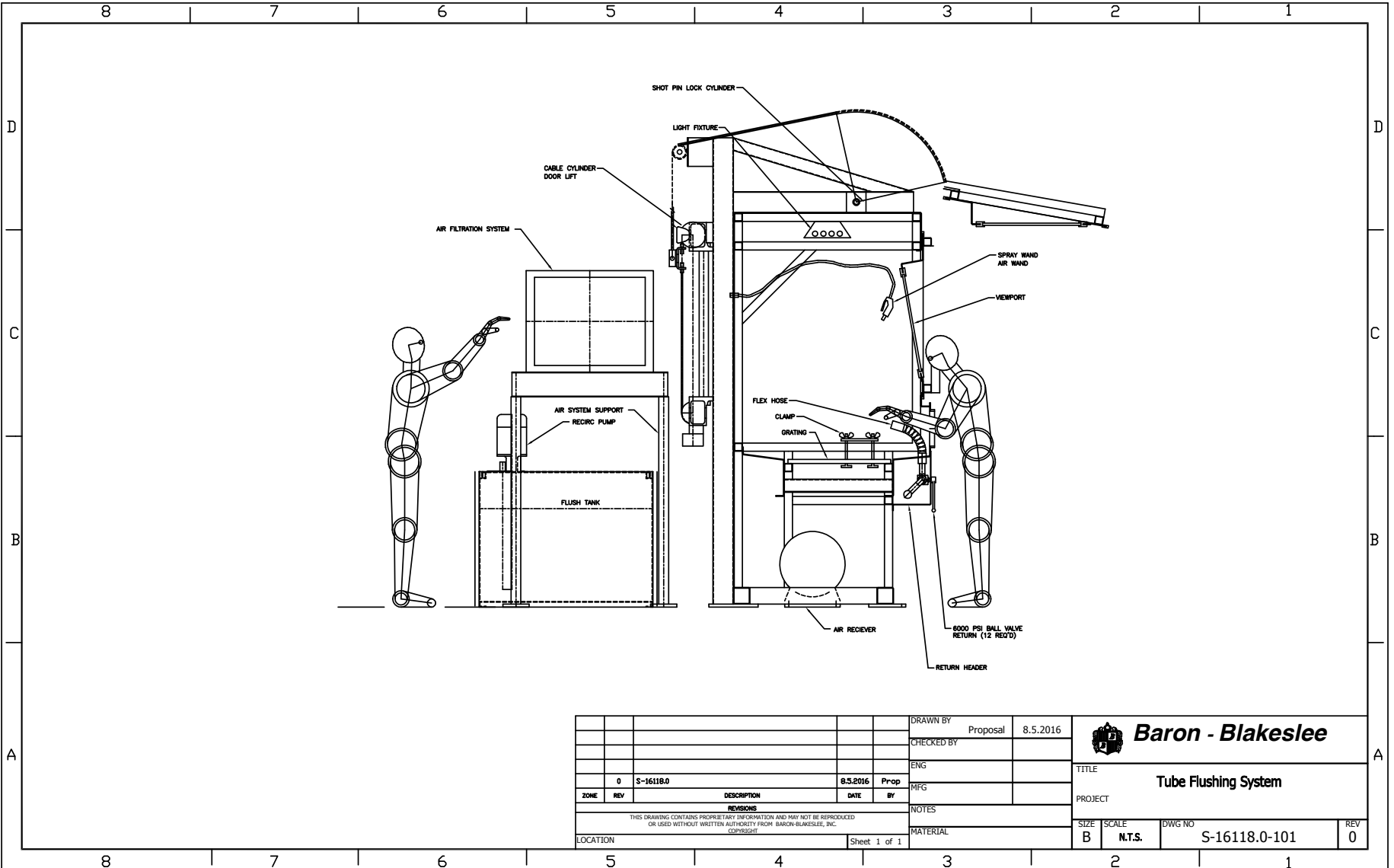
Conforming Clamp Detail


Glovebox Tube Flusher



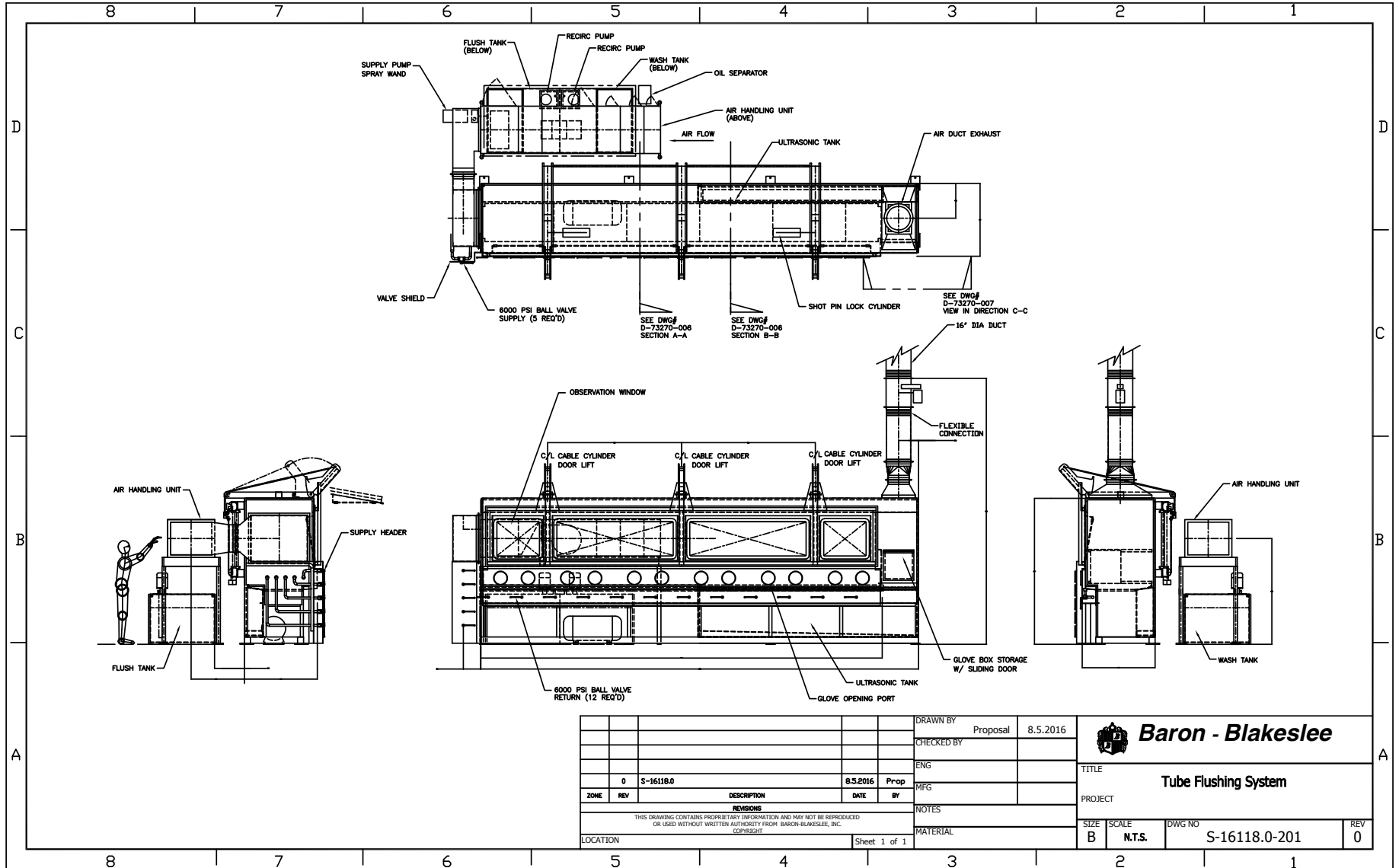
**Aqueous Process
Glovebox Style Enclosure.
Integrated Hydrostatic Leak Test To 6000 PSIG**


Glovebox Tube Flusher



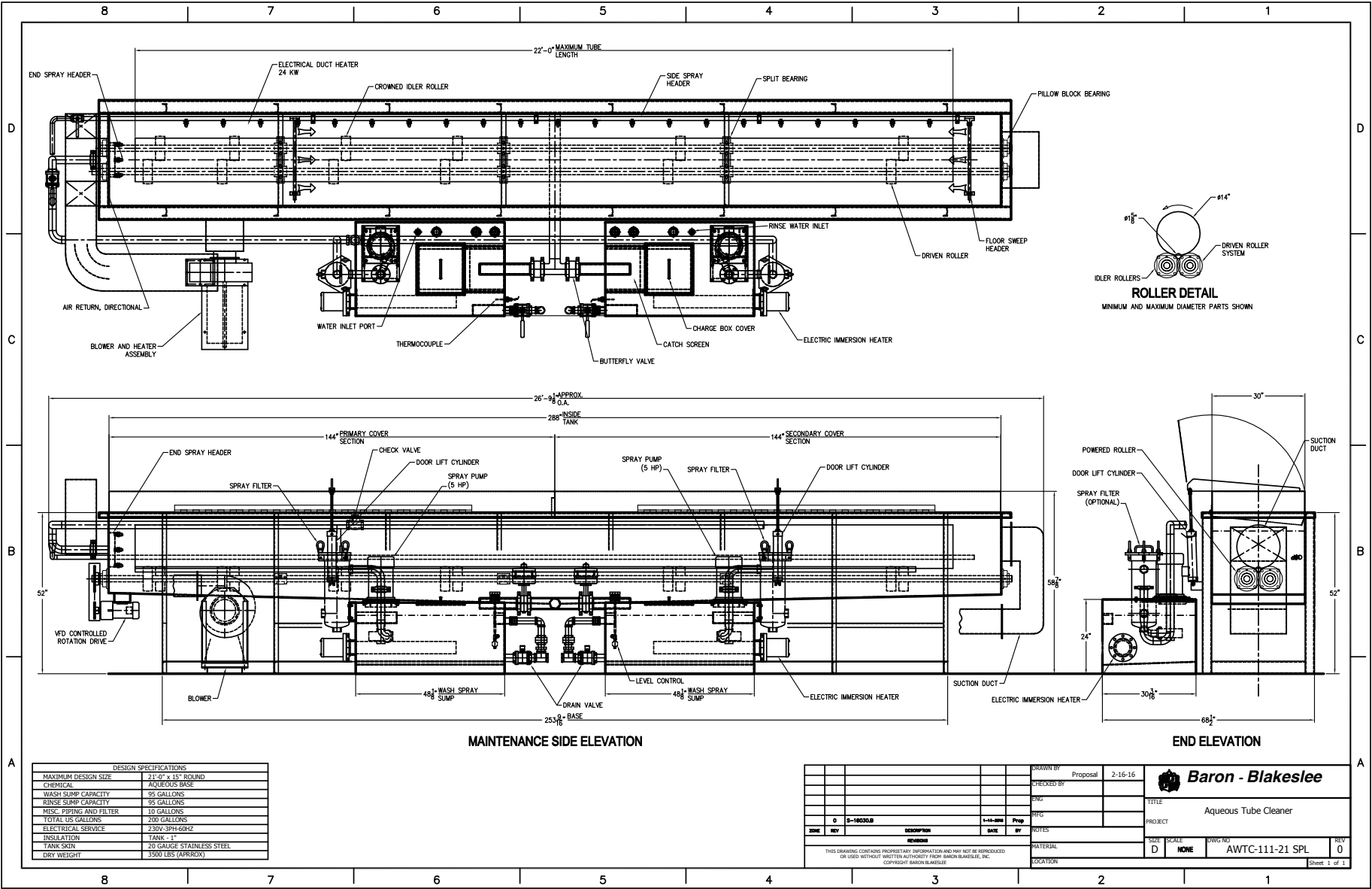
				DRAWN BY Proposal 8.5.2016		 Baron - Blakeslee
				CHECKED BY		
0 S-16118.0				8.5.2016 Prop		TITLE Tube Flushing System
ZONE	REV	DESCRIPTION	DATE	BY	MFG	PROJECT
REVISIONS <small>THIS DRAWING CONTAINS PROPRIETARY INFORMATION AND MAY NOT BE REPRODUCED OR USED WITHOUT WRITTEN AUTHORITY FROM: BARON-BLAKESLEE, INC. COPYRIGHT</small>						NOTES
LOCATION						MATERIAL
				Sheet 1 of 1		SIZE B SCALE N.T.S. DWG NO S-16118.0-101 REV 0

Glovebox Tube Flusher



		DRAWN BY		Proposal	8.5.2016	 Baron - Blakeslee
		CHECKED BY				
0		S-16118.0	8.5.2016	Prop		TITLE
ZONE	REV	DESCRIPTION	DATE	BY		PROJECT
REVISIONS <small>THIS DRAWING CONTAINS PROPRIETARY INFORMATION AND MAY NOT BE REPRODUCED OR USED WITHOUT WRITTEN AUTHORITY FROM BARON-BLAKESLEE, INC. COPYRIGHT</small>						Tube Flushing System
NOTES						SIZE B SCALE N.T.S. DWG NO S-16118.0-201 REV 0
MATERIAL		Sheet 1 of 1				

Rotary Straight Tube Flusher



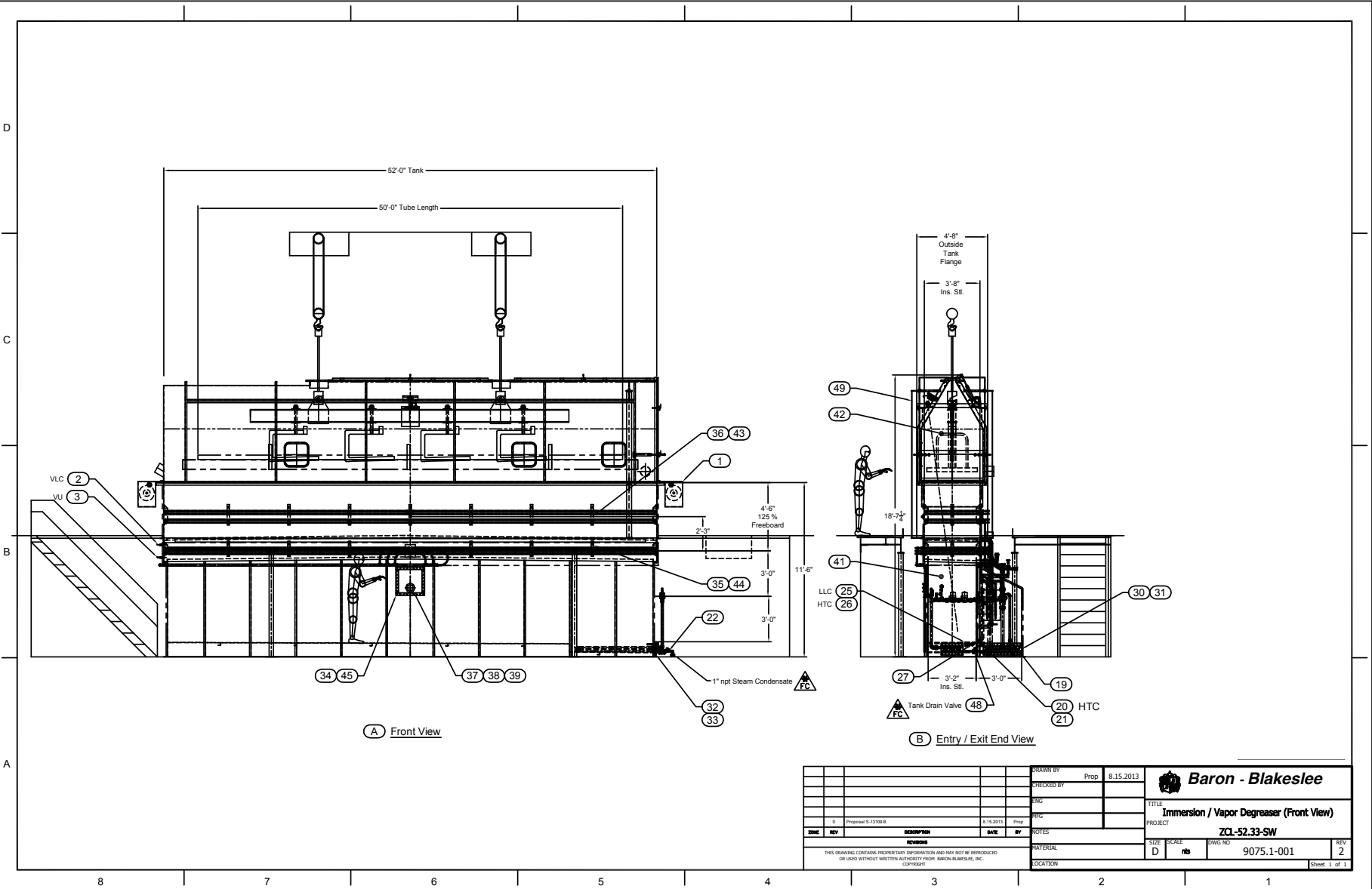
DESIGN SPECIFICATIONS	
MAXIMUM DESIGN SIZE	21'-0" x 15'-0" ROUND AQUEOUS BASE
CHEMICAL	AQUEOUS BASE
WASH SUMP CAPACITY	95 GALLONS
RINSE SUMP CAPACITY	95 GALLONS
MISC. PIPING AND FILTER	10 GALLONS
TOTAL US GALLONS	200 GALLONS
ELECTRICAL SERVICE	230V-3PH-60HZ
INSULATION	TANK - 1"
TANK SKIN	20 GAUGE STAINLESS STEEL
DRY WEIGHT	3500 LBS (APPROX)

PROVIN BY	Proposal	2-16-16	Baron - Blakeslee
CHECKED BY			
DWG			TITLE
PROJ			Aqueous Tube Cleaner
PROJECT			SCALE
MATERIAL			SCALE
LOCATION			DWG NO
			AWTC-111-21 SPL
			REV
			0

THIS DRAWING CONTAINS PROPRIETARY INFORMATION AND MAY NOT BE REPRODUCED OR USED WITHOUT WRITTEN AUTHORITY FROM BARON-BLAKESLEE, INC. COPYRIGHT BARON-BLAKESLEE

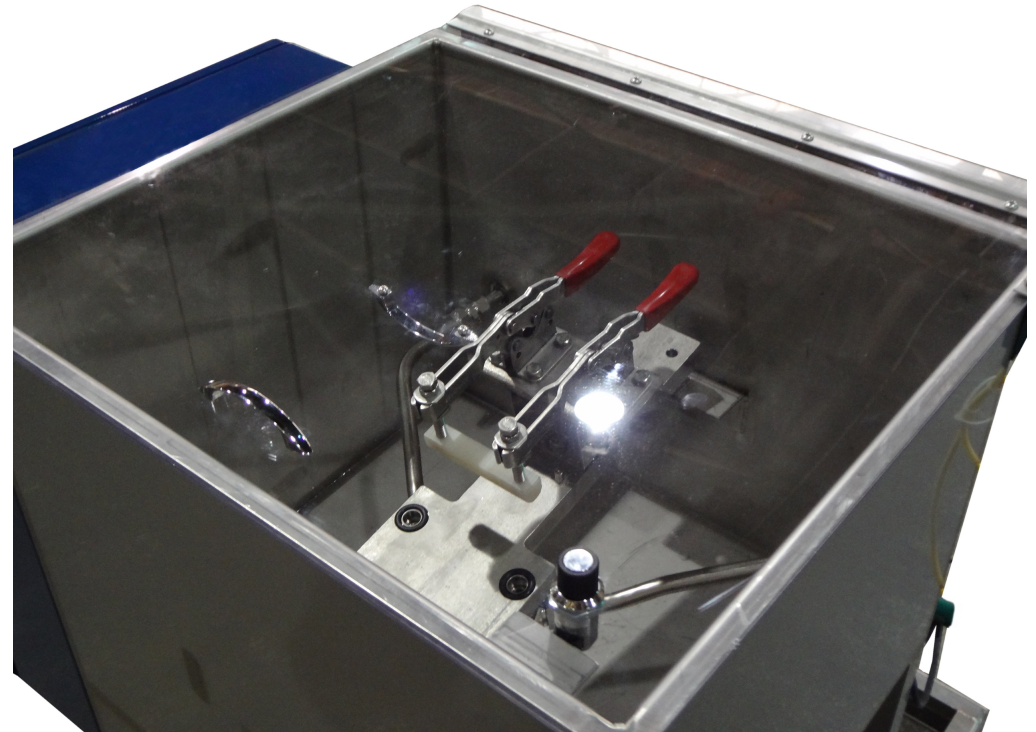
Sheet 1 of 1

Solvent Tube Degreaser



DRAWN BY		Prop	8.15.2013		Baron - Blakeslee		
CHECKED BY					TITLE		
ENG				PROJECT			
MFG				IMMERSION / VAPOR DEGREASER (FRONT VIEW)			
NOTES				ZCL-52.33-SW			
DATE	BY	DESCRIPTION	REVISION	MATERIAL	SCALE	DWG NO.	
0		Proposed 5-1309.B	8.15.2013	Prop	D	nbs	9075.1-001
THIS DRAWING CONTAINS PROPRIETARY INFORMATION AND MAY NOT BE REPRODUCED OR COPIED WITHOUT WRITTEN PERMISSION FROM BARON-BLAKESLEE, INC. COPYRIGHT				EDUCATION	REV	2	Sheet 1 of 1

Heat Exchanger Tube Flusher

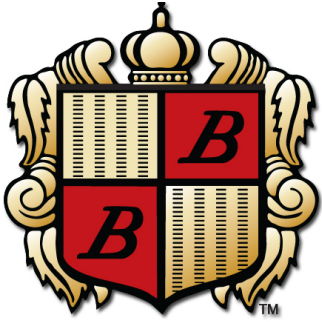


Solvent Or Aqueous Flushing Chemistries

Solvent Tube Flusher



Uses Halogenated Hydrocarbon Vapor Degreasing Solvents
Integrated Drying + Solvent Recycling Via Distillation



Baron·*Blakeslee*

A Wholly-Owned Subsidiary of Service Filtration Corporation

200 Armstrong Avenue
Williamstown WV 26187 USA

www.baronblakeslee.net

304-375-6036

sales@baronblakeslee.net